

3636 Series Assembly Specifications

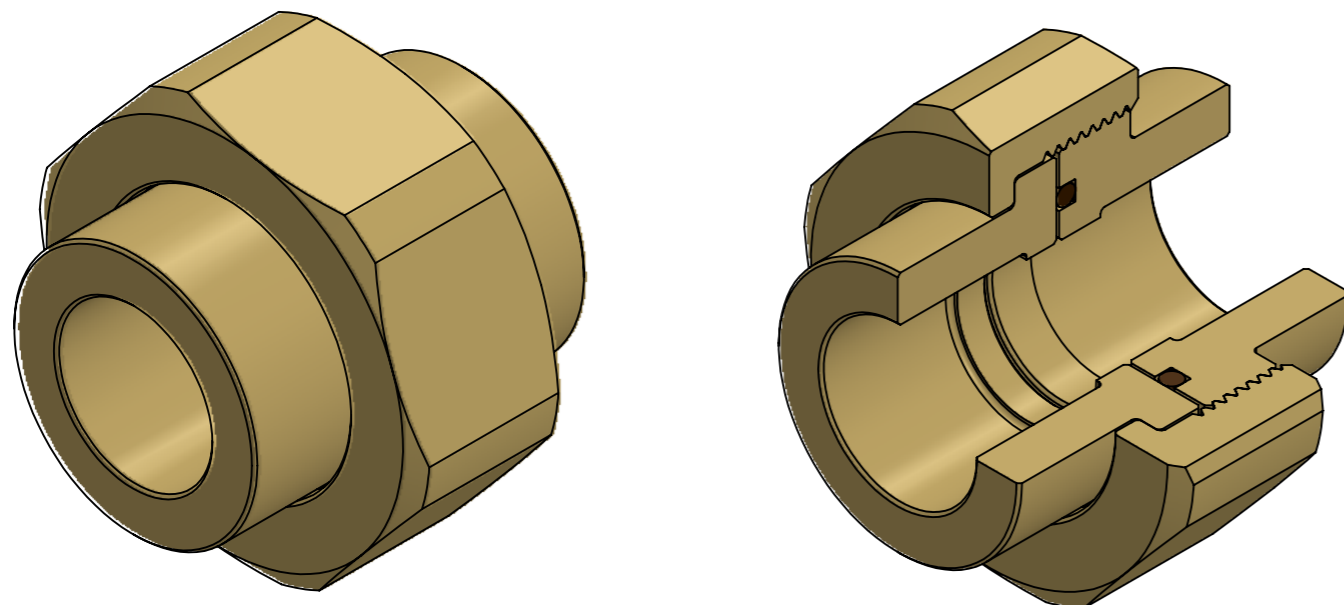
HART Size	A (CS Tube Size)	B (Assembled)	C (Hex Nut Flats)	D (Body Diameter)	E (Tail)	F (Thread)	Weight
3636-1	1/4" CS TUBE	1.760	1.375	.750	.800	.960	0.330
3636-2	3/8" CS TUBE	2.005	1.815	1.125	.940	1.065	0.700
3636-3	1/2" CS TUBE	2.005	1.815	1.125	.940	1.065	0.700
3636-4	3/4" CS TUBE	2.155	2.145	1.375	1.030	1.125	1.000
3636-5	1" CS TUBE	2.600	2.500	1.750	1.250	1.350	1.750
3636-6	1 1/4" CS TUBE	2.770	3.062	2.160	1.380	1.390	2.500
3636-7	1 1/2" CS TUBE	3.105	3.375	2.375	1.530	1.575	3.500
3636-8	2" CS TUBE	3.280	3.875	2.875	1.550	1.730	4.250
3636-9	2 1/2" CS TUBE	4.010	5.000	3.610	2.020	1.990	6.000
3636-10	3" CS TUBE	4.280	5.500	4.300	2.140	2.140	8.000


UNLESS SPECIFIED OTHERWISE, ALL DIMENSIONS ARE IN INCHES

DIMENSIONS FOR REFERENCE ONLY AND ARE SUBJECT TO CHANGE WITHOUT NOTICE

ASSEMBLED LENGTH IS A COMPRESSED DIMENSION AND MAY VARY BASED ON O-RING COMPRESSION

DRAWING NOT TO SCALE



UNLESS SPECIFIED OTHERWISE, ALL DIMENSIONS ARE IN INCHES TOLERANCE: .XXX ± .005	DRAWN HWP	2-10-14	HART Industrial Unions, LLC P.O. Box 310429 Newington, CT 06131  <i>Sure Seal O-Ring Unions</i>
	CHECK SRT	2-10-14	
MATERIAL BRASS	REVISED BTC	2-23-23	TITLE: 3636 Series Assembly Specs
COATING	CUSTOMER		ASSEMBLY 3636 Assembly
SCALE: NTS			A3
SHEET 1 OF 1			